

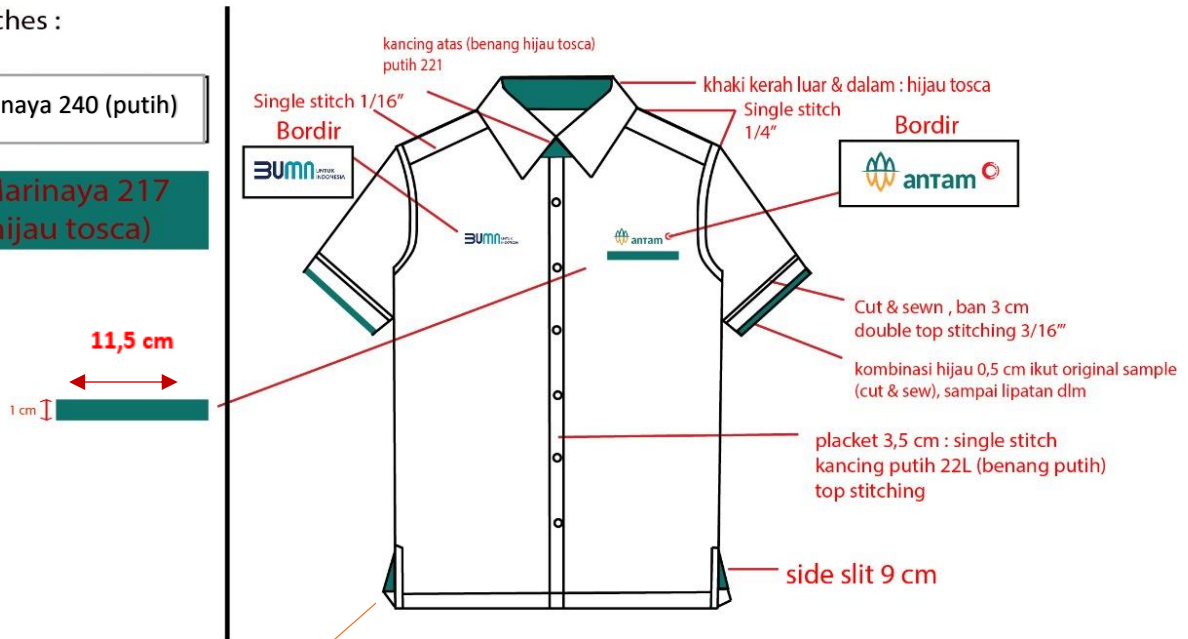
Desain Pakaian Dinas Harian (PDH) ANTAM

PDH KORPORAT ANTAM PRIA

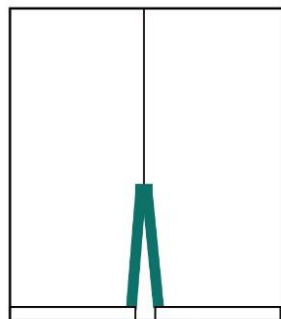
Swatches :

Marinaya 240 (putih)

Marinaya 217
(hijau toska)

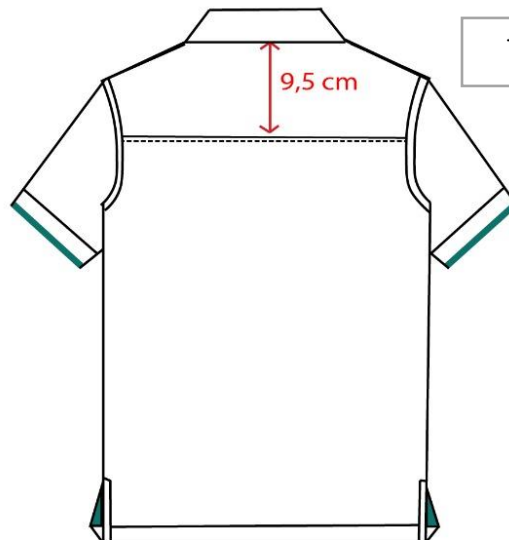


Detail belahan samping pada bagian dalam



lebar kontras
1 cm

Tampak Belakang



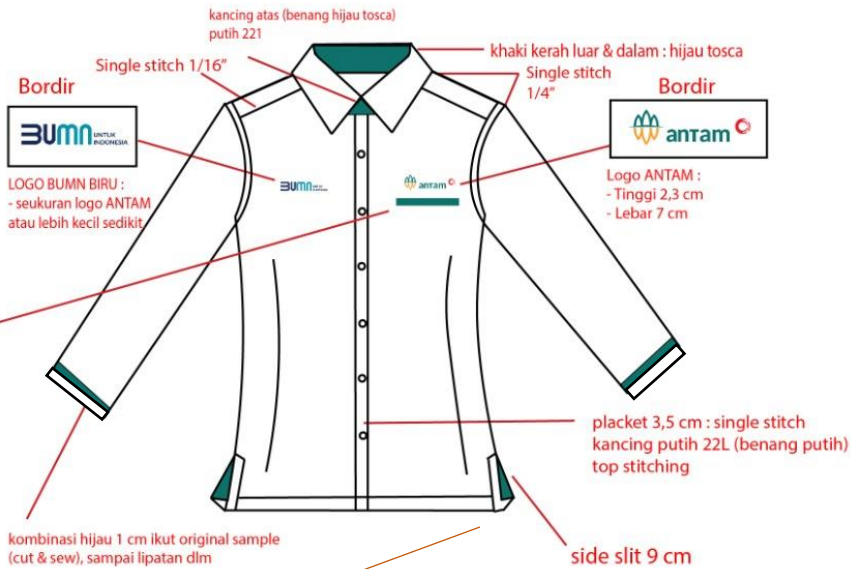
PDH KORPORAT ANTAM WANITA HIJAB

Swatches :

Marinaya 240 (putih)

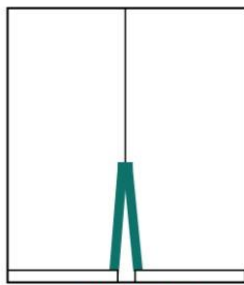
Marinaya 217
(hijau toska)

1 cm

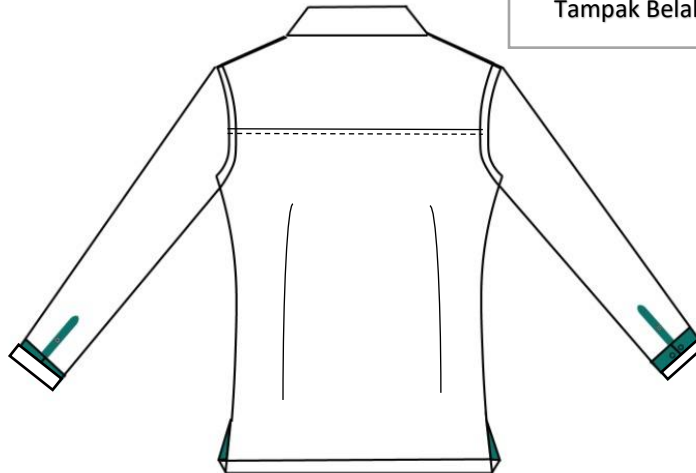


Tampak Belakang

Detail belahan samping
pada bagian dalam



lebar kontras
1 cm



PDH KORPORAT ANTAM WANITA NON-HIJAB

Swatches :

Marinaya 240 (putih)

Marinaya 217
(hijau toska)

1 cm



LOGO BUMN BIRU :
- seukuran logo ANTAM
atau lebih kecil sedikit.



Logo ANTAM :
- Tinggi 2,3 cm
- Lebar 7 cm

Kombinasi hijau 1 cm ikut original sample
(cut & sew), sampai lipatan dlm

kancing atas (benang hijau toska)
putih 221

Single stitch 1/16"
Bordir

khaki kerah luar & dalam : hijau toska
Single stitch 1/4"

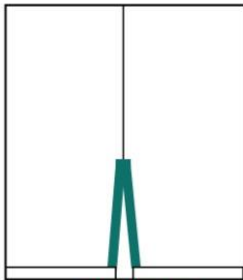
Bordir

lis hijau 0,3 sisip hidup di
bawah lengan.

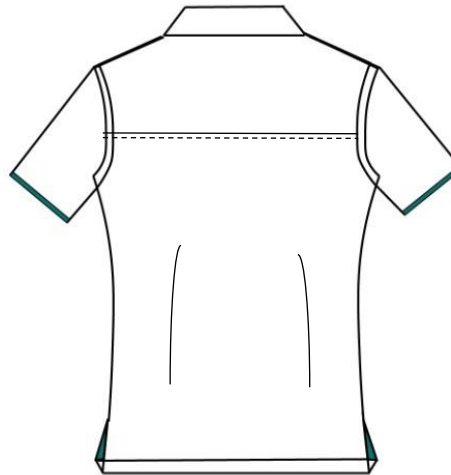
placket 3,5 cm : single stitch
kancing putih 22L (benang putih)
top stitching

side slit 9 cm

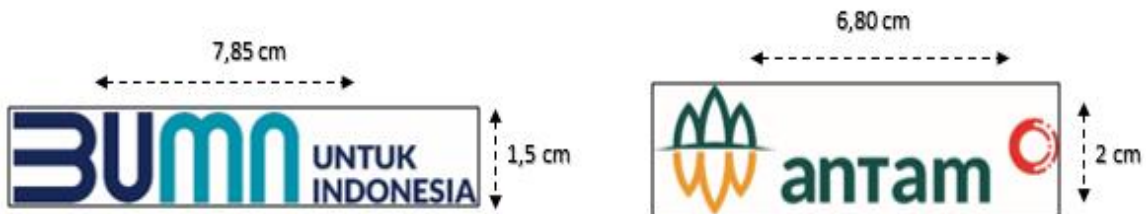
Detail belahan samping
pada bagian dalam



lebar kontras
1 cm



Ukuran Logo Bordir



B. Komposisi Bahan Kemeja KORPORAT

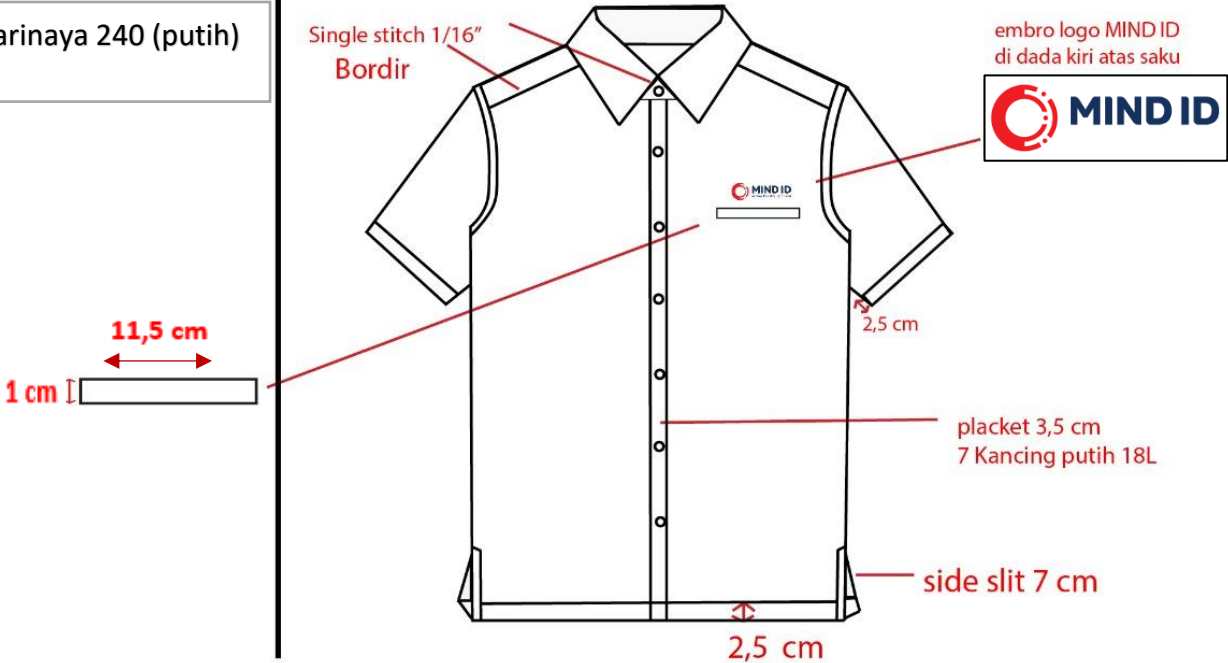
1. Merk : Marinaya / sejenis
2. Komposisi : (Polyester 65%, Rayon 35%)
3. Warna kemeja :
 - Marinaya 217 (Hijau) untuk Korporat ANTAM
 - Marinaya 240 (Putih)

Desain Pakaian Dinas Harian (PDH) MIND ID

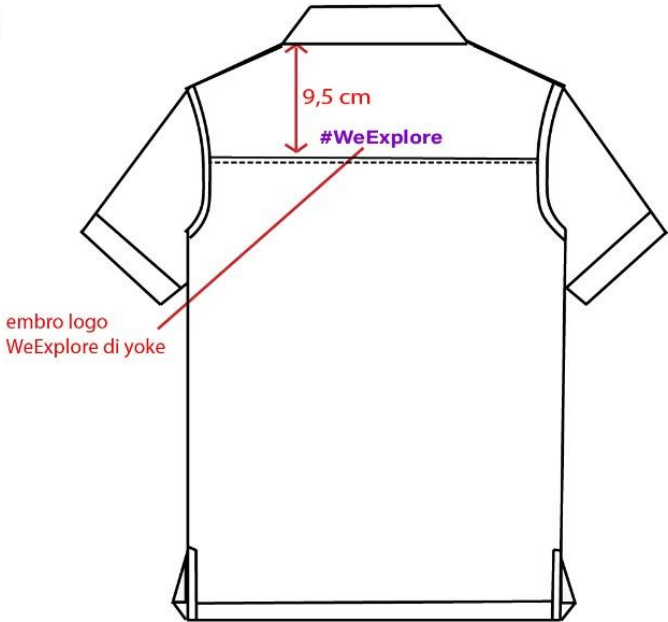
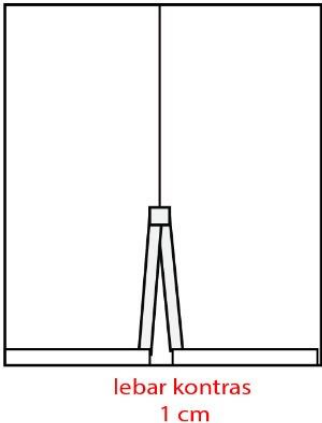
PDH MIND ID PRIA

Swatches :

Marinaya 240 (putih)



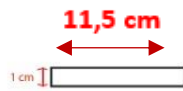
Detail belahan samping pada bagian dalam



PDH MIND ID WANITA HIJAB

Swatches :

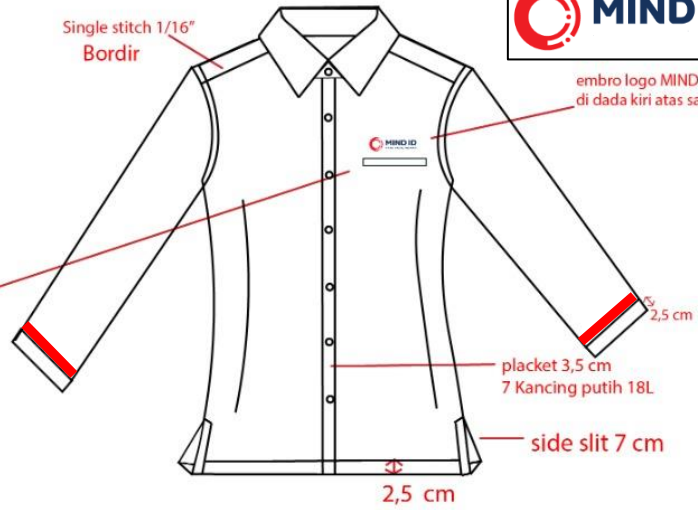
Marinaya 240 (putih)



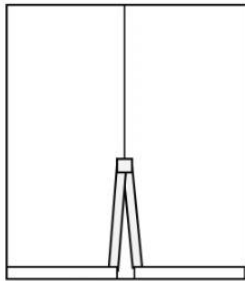
Single stitch 1/16"
Bordir



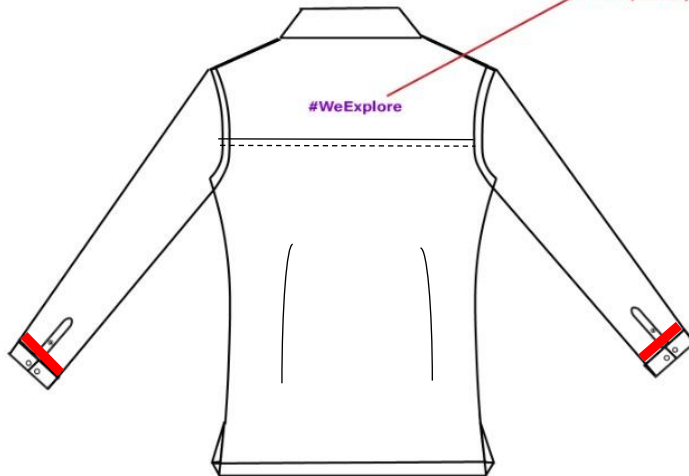
embro logo MIND ID
di dada kiri atas saku



Detail belahan samping
pada bagian dalam



embro logo
WeExplore di yoke



PDH MIND ID WANITA NON HIJAB

Swatches :

Marinaya 213
(putih)

11,5 cm
1 cm

Single stitch 1/16"
Bordir

MIND ID
Mind Industry Indonesia

embro logo MIND ID
di dada kiri atas saku

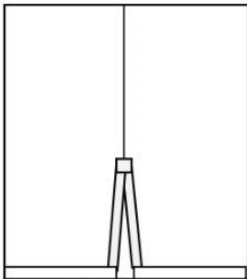
2,5 cm

placket 3,5 cm
7 Kancing putih 18L

side slit 7 cm

2,5 cm

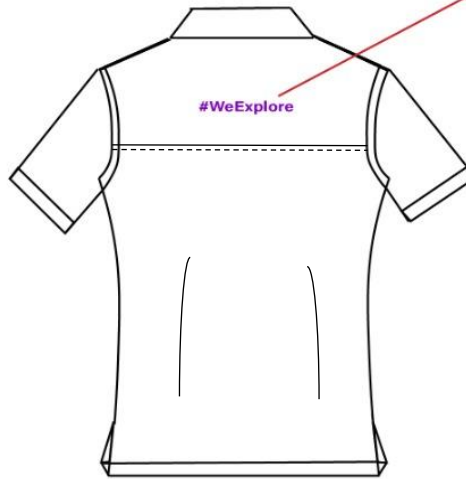
Detail belahan samping
pada bagian dalam



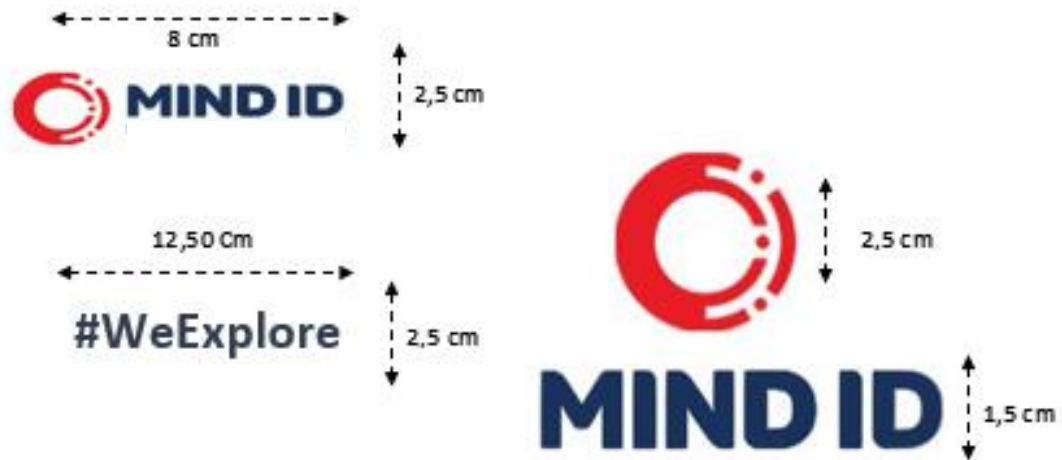
lebar kontras
1 cm

embro logo
WeExplore di yoke

#WeExplore



Ukuran Logo Bordir MIND ID



B. Komposisi Bahan Kemeja KORPORAT

1. Merk : Marinaya / sejenis
2. Komposisi : (Polyester 65%, Rayon 35%)
3. Warna kemeja : Marinaya 240 (Putih)
4. Warna Font : Standar Warna MIND ID

Desain Pakaian Dinas Lapangan (PDL) ANTAM

Untuk PDL Fire Retardant Bahan di celup ke bahan kimia terlebih dahulu

